



ITINERARY



BE PART OF THE CHANGE



The Ultimate Conservation Experience

DAY 1



Morning

Collection at King Shaka Airport, Durban -transport to Hluhwe, Kwazulu Natal, to accommodation.

Afternoon

Arrival at accommodation, Health and safety briefing, Shopping and relax.

DAY 2



Morning

Collection, visiting The Project Rhino K9 Unit and learning K9 behaviour.

Afternoon

Collection for Zulu Croc for hands on snake and crocodile experience!

DAY 3

Morning

Collection and drive to Emdoneni Lodge
Cheetah and Wild Cat
Rehabilitation Centre
Zulu Cultural Talk
Visit to local school



Afternoon

K9 Detection work, learn about indication,
search patterns and handling

Evening

Bushveld night experience discovering
amazing arachnids in the bush!



DAY 4

Morning

K9 tracking work and learning how
to track, read and understand K9's
plus handling.

DAY 5

Morning

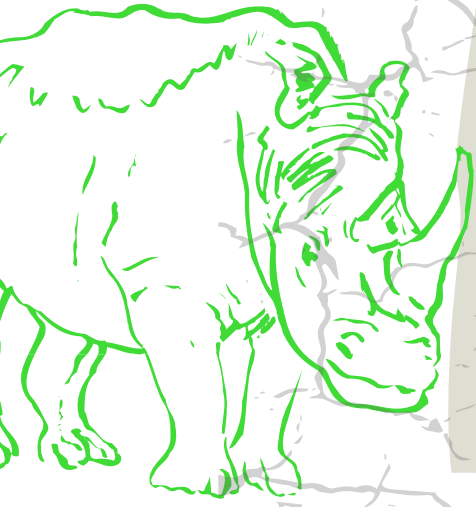
Collection for snare patrol with IFPCP APU Unit in Game Reserve

Afternoon

Nature enthusiast course, focusing on the flora and fauna in a non predator Game Reserve. Including birds, insects and plants.

Evening

A traditional South African Bush Braai!



DAY 6

Morning

Rhino experience (early collection at 0700 at accommodation)

Afternoon

Introduction to anti- poaching theory, history and techniques in combating wildlife crime.



DAY 7

Morning

collection for Anti-poaching patrol with Project Rhino K9- practical

Afternoon

Anti- poaching patrol with Project Rhino K9 unit

Evening

A traditional South African meal!



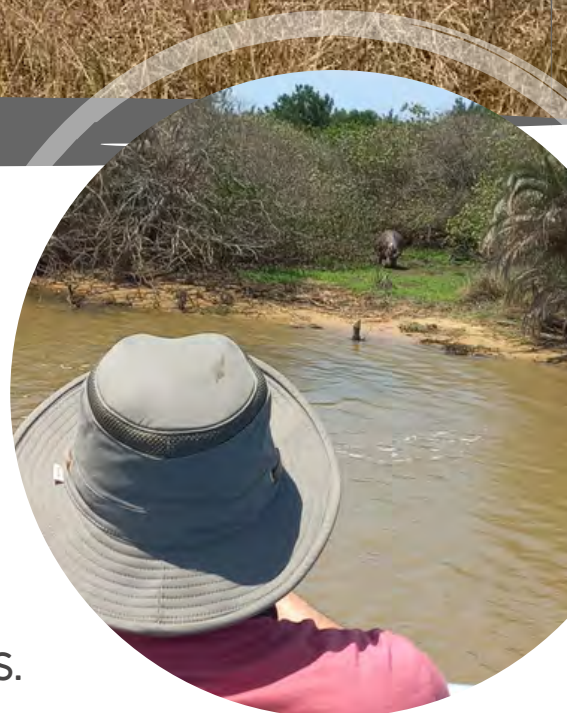
DAY 8

Morning

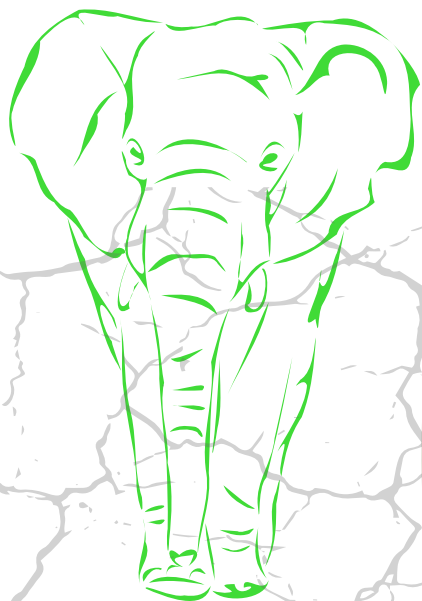
Sodwana Bay Boat Trip Whale Watching (seasonally dependant) or boat trip to St Lucia for hippo & wildlife watching

Afternoon

Game drive and free time at the cottages.



DAY 9



Morning

Big 5 Game Drive

Afternoon

Bush survival skills training

Evening

Bush Braai/Bush Camping at Game Reserve



DAY 10

Morning

Game Drive

Afternoon

Snare and anti-poaching patrol in Game Reserve.





The Ultimate Conservation Experience

DAY 11



Morning

Breakfast then departure to King Shaka Airport, Durban

Afternoon

Departure and flight home!



See you in Africa!



Understanding Wildlife Crime

Wildlife crime, such as poaching & trafficking of illegal contraband, is on the rise across the world, pushing many species to the edge of extinction.



A highly trained APU dog, with a powerful sense of smell can reduce poaching by up to 75%. They work alongside the rangers within their conservancies, tracking human scent and detecting illegal wildlife activity

Dogs4Wildlife aid in the training & supply of these dogs to conservancies & reserves across Africa, that are in dire need of help.



Our dogs are bred & initially trained in South Wales, UK, before deployment to Africa.

We also provide training to future dog handlers, ensuring they are able to utilise our dogs to their full potential.



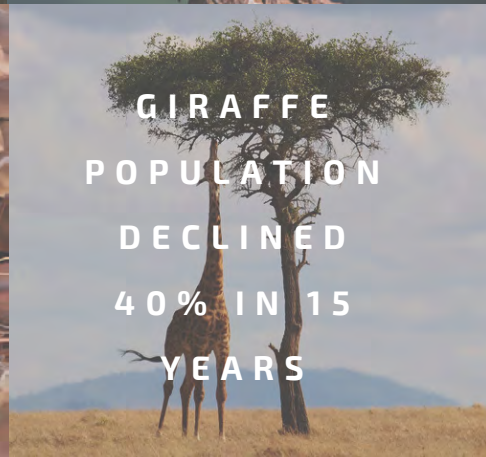


CONSERVING WILDLIFE

No One Will Protect What They Don't Care About; And No One Will Care About What They Have Never Experienced"

-David Attenborough

The aim of this Conservation Experience in conjunction with the IFPCP and Project Rhino is to give YOU the greatest conservation-based experience we can, whilst showcasing the dedicated work that anti-poaching rangers do in the fight to save wildlife across Africa.



HELP US, HELP THEM



General Info

Where to fly to



The programme takes place in the gorgeous and unspoilt KwaZulu Natal, which is a few hours from Durban so you will need to land in King Shaka International Airport, Durban ready for collection from your driver who will take you to Hluhuwe, KZN to your accommodation.

Deposits



The programme is on a first come first served basis which requires an initial deposit to be paid per person for the trip. An application pack will need to be filled in with both your flight and travel insurance details, once the initial deposit has been paid.

Costs

The cost of this programme is £1500 per person excluding flights, travel insurance (mandatory) and is on a self-catering basis.



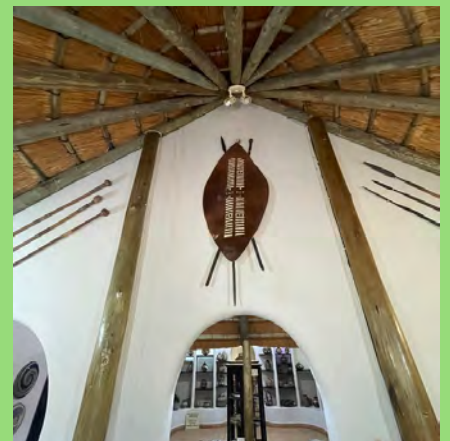


About Hluhluwe/KwaZulu Natal



Hluhluwe is a small town in northern KwaZulu-Natal, South Africa. It is situated between iSimangaliso Wetland Park and Hluhluwe–iMfolozi Park on the banks of the Hluhluwe River. Hluhluwe is situated on the elephant coast, an area known for its national parks, natural diversity and cultural heritage. Hluhluwe has a large population of both Black and White Rhino.

The Zulu culture in the province of KwaZulu-Natal is one that has shaped the local history and heritage to a large extent. Participants of our Conservation Programme will experience it in a hands-on way, becoming part of the experience!





Accommodation



HLUHLUWE *Country Cottages*



The accommodation will be based on a sharing process with either twin or triple rooms provided and the odd single (dependant on the availability of the cottages) There is also the option of paying an additional supplement to get your own cottage and or room if so desired, please contact us with this request directly.





Self-catering Accommodation

Accommodation is provided on a self-catering basis at the Hluhluwe Cottages in Hluhluwe, KwaZulu-Natal.

The Hluhluwe Country Cottages are located in the heart of the Elephant Coast region of KwaZulu-Natal, on a farm 1km outside of the well-known agricultural and tourism hub of Hluhluwe village. The 6 cottages are situated on a game-fenced sanctuary bordered by the Ngweni River. Participants can enjoy walks in safety along the reserve paths.





Cottages

The air-conditioned, self-catering cottages have an open plan lounge/dining/fully fitted kitchen. DSTV and braai facilities are available. Towels and all bedding are provided and the rooms are serviced daily. Laundry facilities are available on-site.



Bedrooms

Each bedroom offers en-suite bathrooms with either a shower or bath option and double or twin beds. Free Wifi is available in rooms.





Facilities

The property has a communal pool and sun loungers that can be used during free time.

Trips to the local supermarket will be provided

A braai and traditional South African Potjie are included in the programme on 2 nights during your stay.



Other dining facilities:

You are welcome to use other dining facilities on site, including:

- Fig Tree Cafe & bar, on-site
- Ngweni Railroad Brewery & Cafe
- Amazing Zulu Cultural Museum/shop on-site



The Lake House

For larger groups who want to stay together in an exclusive Lake view villa with sweeping views of False Bay for an additional fee.

This stunning property also has views of Isimangaliso Wetland Park and welcomes amazing bird life and bush babies and is situated high up on a wildlife Estate within one of the richest remaining pockets of sand forest left in Southern Africa.



Facilities

The Lake House offers accommodation with:

- Free WiFi
- Air conditioning
- Outdoor private swimming pool and a terrace
- Private gardens and free private parking.
- The villa comes with 5 bedrooms
- A kitchen with a microwave and a fridge
- Flat-screen TV
- Multiple seating areas
- 4 bathrooms equipped with showers. Towels and bed linen are featured in the villa.





What you can expect...



“
The trip of an absolute
lifetime, this has been
the most incredible
adventure and words
can't even describe the
experiences and
memories made
”





ITINERARY

As Ambassadors, you will experience many of the conservancies and wildlife that KwaZulu Natal has to offer, alongside observing some of the valuable work that the K9 unit undertakes.

Some of the amazing experiences you will be part of:

The trip is jam packed with exciting experiences for up to 6 people (larger groups can be accommodated on request)

Some of the things we will cover include:

- Wildlife identification
- Animal behaviour and wildlife tracking skills
- Learning about and being involved in numerous anti-poaching techniques
- K9 tracking
- Spending time with Project Rhino's K9 unit to develop an understanding of training, behaviour and management
- Learning the history behind the illicit wildlife trade
- Zululand culture and history
- Visiting primary schools within the local community that we support- which is hugely important to us.
- Studying ecological relationships, wildlife law and bush survival
- The relationship between Flora and Fauna and reclamation of land.
- Whale watching or St Lucia Boat Trip (seasonally dependant)
- Big 5 game drives in many different conservancies and the role they play in conservation.



Why should you book this experience?



You will experience first-hand, many of the issues the dedicated rangers face daily as boots on the ground, as well as some AMAZING wildlife and scenery and unforgettable adventures! This experience couldn't be more perfect for team building and corporate trips.

You will be giving back to conservation, whilst fulfilling your sustainability criteria and having the absolute trip of a LIFETIME!





Frequently Asked Questions

For the latest travel advice for South Africa, please visit either;
<https://www.gov.uk/foreign-travel-advice/south-africa> OR
<https://travel.state.gov/content/travel/en/traveladvisories/traveladvisories/south-africa-travel-advisory.html>

Who should join this programme?

No wildlife experience is necessary, but a passion for the outdoors, an adventurous spirit and a desire to contribute to the protection of endangered and vulnerable animals are absolutely required. You should be able to communicate reasonably well in spoken English. The programme is perfect for individuals / groups passionate about conservation, wildlife, anti-poaching and of course working dogs. The programme can be tailored to suit the age range, skill level and interests of particular groups.

What special equipment do I need to bring?

Please bring suitable clothing for a hot climate, good sunscreen, caps and sunglasses are advisable. The climate in KwaZulu-Natal is humid and due to the proximity to the ocean the weather can also change quickly, a light waterproof coat is essential. It is advisable to pack Mosquito repellent, anti-histamines and some painkillers / ibuprofen. Some Imodium and Dioralyte can also be valuable inclusions in your baggage. A good pair of binoculars and a small camera, as well as some nature identification phone apps are also useful. Another essential item is a small rucksack /bag for carrying your water and other items during days out in the bush.

How fit do I need to be?

There is a fair amount of foot-based tracking and hiking through different terrains. A moderate level of fitness and all-round good health will make your time more comfortable.



Frequently Asked Questions

How old do I need to be?

The minimum age for participation is 18 years. There is no upper age limit, but for volunteers aged over 65, we do require your medical form to be signed by a practising doctor / GP.

How many people will there be?

Outside of the programme instructors and staff, each programme has been designed for a maximum of 6 people, the only exceptions will be if a group larger than 6 wish to participate in the programme at the same time.

When can I join?

Start dates are flexible throughout the year, but the 11 day programme will run from March to November, once a month on pre arranged dates.

When is the best time to come?

With hot and humid summers (October to April) and mild, dry winters (May to September), whenever you travel to sub-tropical KwaZulu-Natal, a warmth will always be in the air. Temperatures stay highest along the coast, cooling the further inland and west you go. Durban and the North Coast stay warm, at around 20-25°C. Make sure you come prepared with a suitable SPF and protective clothing to avoid sun stroke.



Frequently Asked Questions

What animals will I encounter?

The KwaZulu-Natal region of South Africa is an area teeming with wildlife and home to some spectacular scenery. The reserves included within the programme are both BIG 5 and smaller non predator game reserves, so an abundance of all of the best of Africa's diverse and fascinating wildlife could be encountered during your stay with us.

Do I get some time off?

The programme is 11 days long. You will get breaks during the heat of the day to relax and recharge, and free time in the evenings for leisure and your first and final day is allocated for travelling.

How much spending money should I bring?

We recommend bringing around R1,500 in local currency (South African Rand) to cover personal expenses such as drinks, food, souvenirs, snacks, tips etc. It is also advisable to bring a suitable debit card for the required food shopping trips to the local supermarket.

Do I need a visa?

We recommend you have at least two blank pages in your passport, and it must be valid for at least 6 months after your arrival date in South Africa. Many nationalities can get a 90-day tourist visa upon arrival into Durban. However, it is your responsibility to check your visa eligibility prior to arrival.

What vaccinations do I need?

Please consult your local GP or travel clinic for detailed medical advice.

Malaria – Hluhluwe is regarded as a low risk malaria area, but please consult your GP for guidance.

All attendees should make sure their relevant vaccinations are up to date, including Tetanus.

Please visit your country's government website for more details.



**WE LOOK FORWARD
TO WELCOMING YOU!**